



5 Sandy Surf

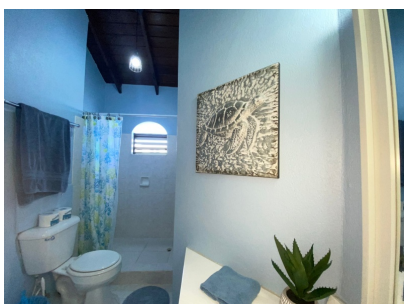
From US \$175/pn

Christ Church, Worthing

Ref: 2101187

Welcome to Sandy Surf! Situated on the second floor, this lovely 2 bedroom, 2 bathroom ocean front condominium offers comfortable holiday accommodation with incredible views from a sea front patio. Good swimming is just steps away with a stunning white sandy beach and warm azure blue waters of the Caribbean sea. Sandy Surf Apartments are a small development of attractive condominiums within easy walking distance of shopping, restaurants, bars and public transportation. The property is nestled in the centre of the South Coast and St. Lawrence Gap with its vibrant night life is a 10 minute walk while Bridgetown is about 15 minutes drive. There is a spacious, attractive fully equipped kitchen, open living and dining area which opens onto the covered terrace with spectacular views over...

Gallery



Property Description

Location: 5 Sandy Surf, Worthing, Worthing, Barbados

Welcome to Sandy Surf! Situated on the second floor, this lovely 2 bedroom, 2 bathroom ocean front condominium offers comfortable holiday accommodation with incredible views from a sea front patio. Good swimming is just steps away with a stunning white sandy beach and warm azure blue waters of the Caribbean sea. Sandy Surf Apartments are a small development of attractive condominiums within easy walking distance of shopping, restaurants, bars and public transportation. The property is nestled in the centre of the South Coast and St. Lawrence Gap with it's vibrant night life is a 10 minute walk while Bridgetown is about 15 minutes drive. There is a spacious, attractive fully equipped kitchen, open living and dining area which opens onto the covered terrace with spectacular views over the sea. The en-suite master bedroom has built in wardrobes. The second bedroom has twin beds and built in wardrobes.

Additional Information

Holiday Let	Beds: 2	Baths: 2
Type: Apartment/Condo	Air Conditioned Bedrooms	Full Kitchen
Fully Furnished included linens and towels	Large Terraces/Patios	Floor Area : 900 SQ. FT.