



2nd Floor Office Space at Lewis Towers

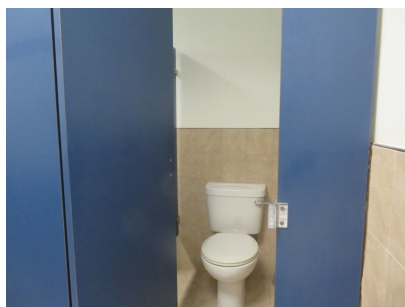
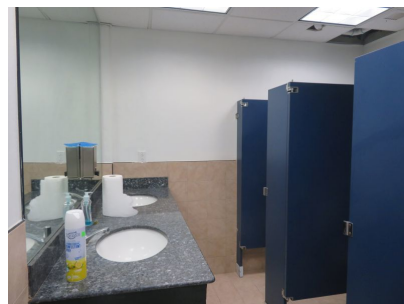
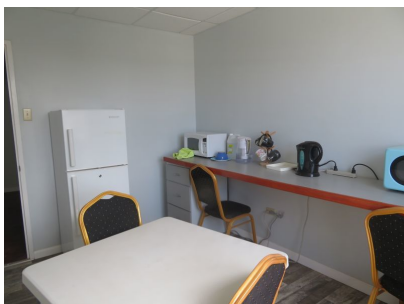
US \$2,250/mth.

Christ Church, Rockley

Ref: 2101071

Approximately 1,000sq.ft of 2nd floor unfurnished office space situated in Lewis Towers, Rockley, Christ Church. The space offers a large open plan area, two private offices and access to the communal restrooms and lunch room. Lewis Tower is a purpose-built office building, offering large open office spaces. There is a lift servicing the offices as well as stairs internally and externally as a fire escape. The building is fully serviced and has independent electric and water supply as well as a state of the art security and fire alarm system. The property is well positioned directly on Rockley Main Road with large amounts of passing foot and driving traffic. Tenant pays electricity.

Gallery



Property Description

Location: Lewis Towers, Rockley, Rockley, Barbados

Approximately 1,000sq.ft of 2nd floor unfurnished office space situated in Lewis Towers, Rockley, Christ Church. The space offers a large open plan area, two private offices and access to the communal restrooms and lunch room. Lewis Tower is a purpose-built office building, offering large open office spaces. There is a lift servicing the offices as well as stairs internally and externally as a fire escape. The building is fully serviced and has independent electric and water supply as well as a state of the art security and fire alarm system. The property is well positioned directly on Rockley Main Road with large amounts of passing foot and driving traffic. Tenant pays electricity.

Additional Information

For Rent

Type: Office

Desirable Location

Open Plan

Unfurnished

Elevator

Floor Area : 1000 SQ. FT.