

Rosedale 98, Valley View

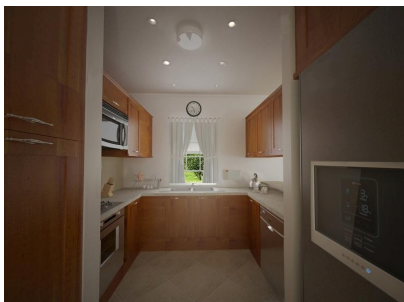
US \$472,577

St. Thomas, Vaocluse

Ref: 2100546

Valley View is a small residential development of 37 traditionally designed Plantation Style homes complete with window hoods, brick driveways, coral rendering and tiled roofs. Each home offers an open plan design with french doors, large patio,- Italian-style kitchen with granite counter tops and separate laundry room. There are 3 bedrooms and 2 bathrooms; an en-suite master bedroom with the other bedrooms sharing an adjacent bathroom. Each property is beautifully finished with neutral porcelain tiles throughout, built in wardrobes, ceiling fans and tray ceilings completing the functional yet elegant style of each home. The community includes a gated entrance and landscaped communal area with playground.- Valley View is set in a cool, quiet, elevated countryside area.- Warrens commercial...

Gallery



Property Description

Location: Valley View, Vaucluse, Barbados

Valley View is a small residential development of 37 traditionally designed Plantation Style homes complete with window hoods, brick driveways, coral rendering and tiled roofs. Each home offers an open plan design with french doors, large patio,- Italian-style kitchen with granite counter tops and separate laundry room. There are 3 bedrooms and 2 bathrooms; an en-suite master bedroom with the other bedrooms sharing an adjacent bathroom. Each property is beautifully finished with neutral porcelain tiles throughout, built in wardrobes, ceiling fans and tray ceilings completing the functional yet elegant style of each home. The community includes a gated entrance and landscaped communal area with playground.- Valley View is set in a cool, quiet, elevated countryside area.- Warrens commercial and shopping center is a short 10 minute drive away while beautiful beaches, as well as the South and West Coast are within 15 minutes drive.

Additional Information

For Sale	Beds: 3	Baths: 2
Type: House/Villa	Appliances Included	Fully Enclosed
Gated Community	Floor Area : 1496 SQ. FT.	