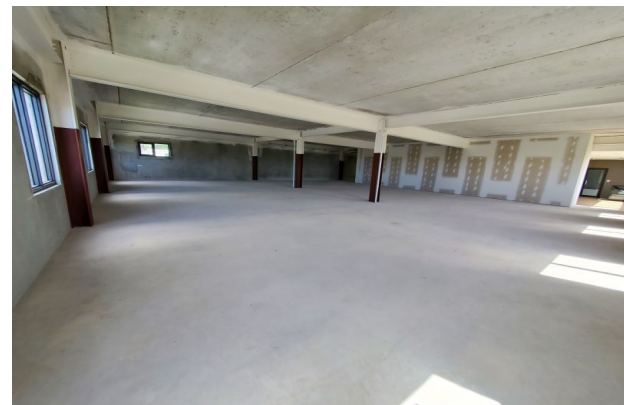




**RON KARP
REALTY LTD.**

REAL ESTATE AGENTS

Dacia, Golf Club Road
Rockley, Christ Church
Tel: (246) 436 7440
Fax: (246) 436 3204
karpreal@karpreal.com
www.karpreal.com



"Aberdare - Level 2 Office..."

Christ Church, Vauxhall

US \$7,465/mth.

Ref: 2402412

Key Features

- A/C Throughout
- Security System
- Desirable Location
- Suitable for Conversion / Re-development
- Open Plan
- Unfurnished





A expansive bare office space, encompassing approximately 3,144 sq. ft. situated within the prestigious Aberdare Office Complex. This space offers complete flexibility for customization in both layout and finishes, allowing your organization to create an environment that aligns perfectly with its unique needs. As a part of a distinguished 5-star building, this office space boasts contemporary finishes and state-of-the-art facilities designed to enhance productivity and comfort. Features include: •Elevator Access & Wheelchair Accessibility: Ensuring ease of movement for all employees and visitors. •Interior and Exterior Parking: Ample parking availability for both staff and guests. •Smart Security & Automation: Advanced security systems and automation technology for a safe and convenient work environment. •Energy Efficiency: Designed with sustainability in mind, contributing to reduced operational costs and a positive environmental impact. In addition to the outstanding workspace, tenants will enjoy exclusive access to a rooftop kitchen and lounge, perfect for staff gatherings and private events. This vibrant space includes well-appointed bathrooms and opens onto a spacious patio, providing breathtaking panoramic views of the stunning south coast of the island. Rent is subject to VAT

For Rent	Type: Office	A/C Throughout
Desirable Location	Open Plan	Security System
Suitable for Conversion / Re-development	Unfurnished	Elevator
Floor Area : 3144 SQ. FT.		