



174 Regency Park

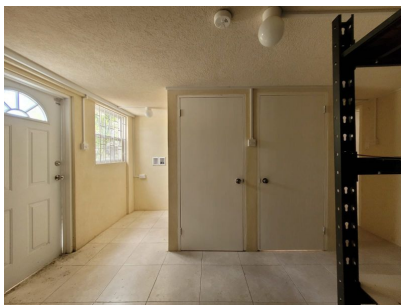
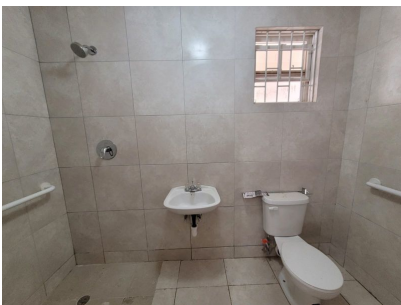
US \$375,000

Christ Church, Regency Park

Ref: 2301931

A renovated two-storey unfurnished 5 bedroom residence recently converted for use as a retirement home for the elderly situated in the established neighbourhood of Regency Park. The property offers an entrance porch, spacious open plan living areas a full bathroom with walk-in shower, 2 water closets, storage area and kitchen on the lower level. The upper level offers the 5 large bedrooms (1 ensuite), separate living and dining rooms and a covered patio. Other features include an external ramp leading to the patio, wrought iron security bars throughout, water tank, landscaped gardens and a concrete paved driveway leading to a forecourt parking area all enclosed by chain linked fencing with an electronic gated entrance. Regency Park is just minutes away from the South Coast with its many...

Gallery



Property Description

Location: 174 Regency Park, Regency Park, Barbados

A renovated two-storey unfurnished 5 bedroom residence recently converted for use as a retirement home for the elderly situated in the established neighbourhood of Regency Park. The property offers an entrance porch, spacious open plan living areas a full bathroom with walk-in shower, 2 water closets, storage area and kitchen on the lower level. The upper level offers the 5 large bedrooms (1 ensuite), separate living and dining rooms and a covered patio. Other features include an external ramp leading to the patio, wrought iron security bars throughout, water tank, landscaped gardens and a concrete paved driveway leading to a forecourt parking area all enclosed by chain linked fencing with an electronic gated entrance. Regency Park is just minutes away from the South Coast with its many amenities, Sheraton Centre and the Wildey Commercial area.

Additional Information

For Sale	Beds: 5	Baths: 3
Type: House/Villa	Desirable Location	Rental Potential
Fully Enclosed	Landscaped Grounds	Open Plan
Unfurnished	Wrought - Iron Grills	Floor Area : 2796 SQ. FT.
Gross Land Area : 9308 SQ. FT.	Nett Land Area : 7655 SQ. FT.	